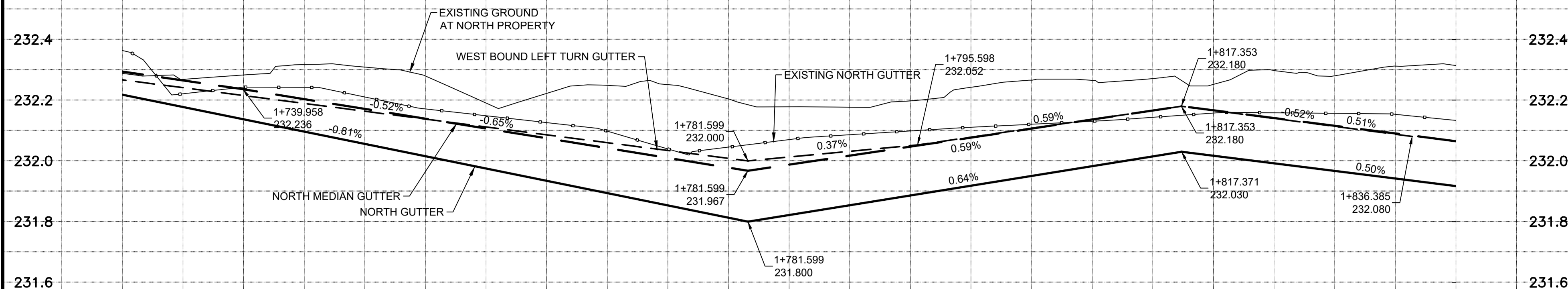
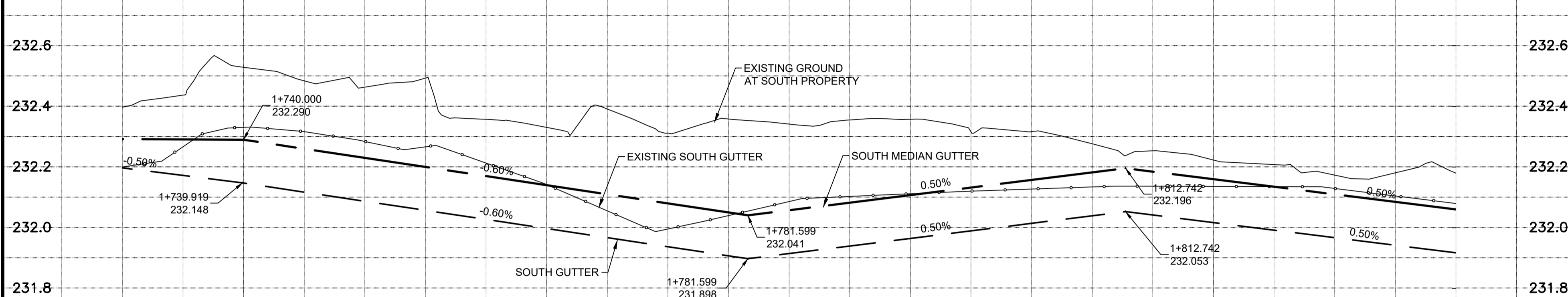


WESTBOUND LANES



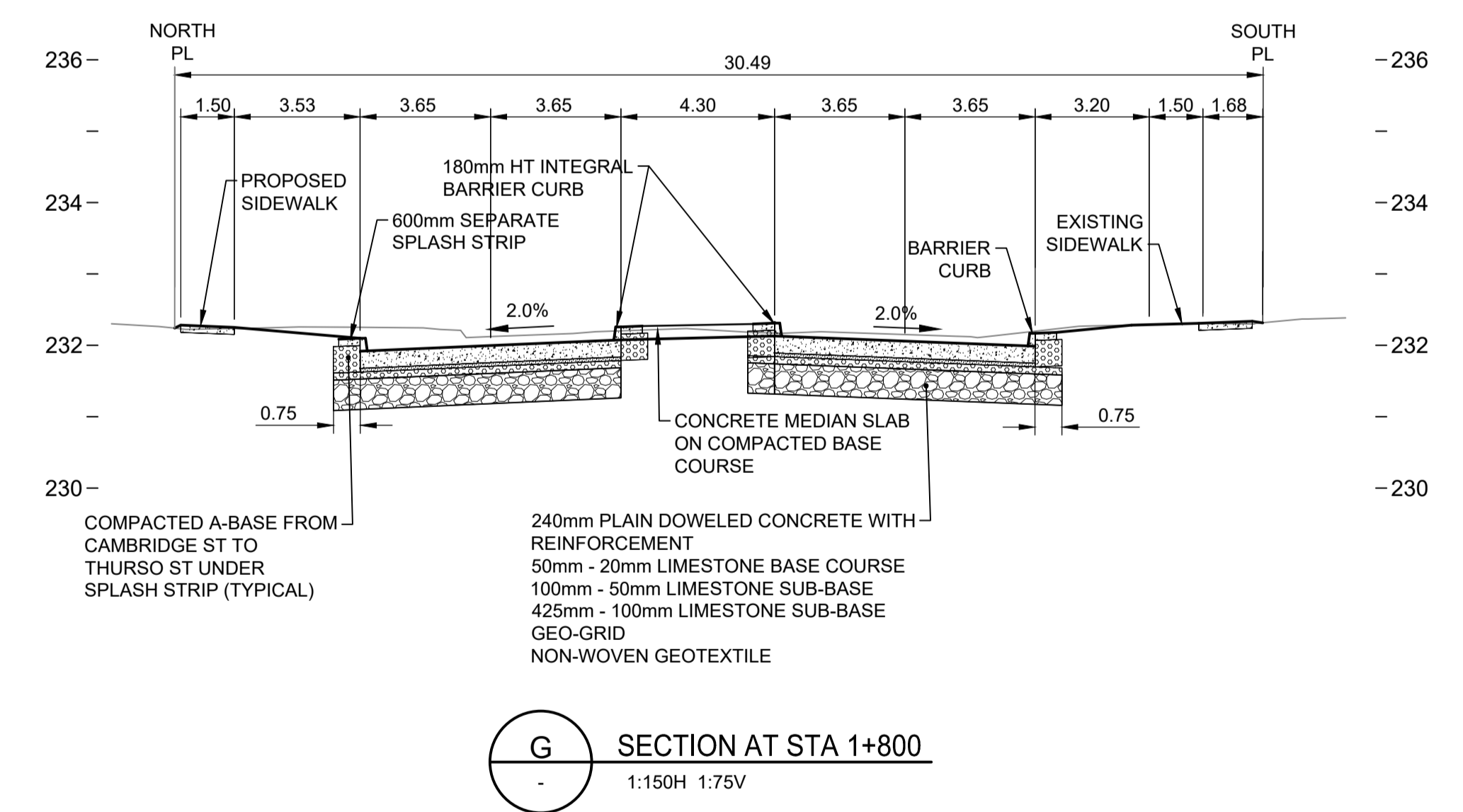
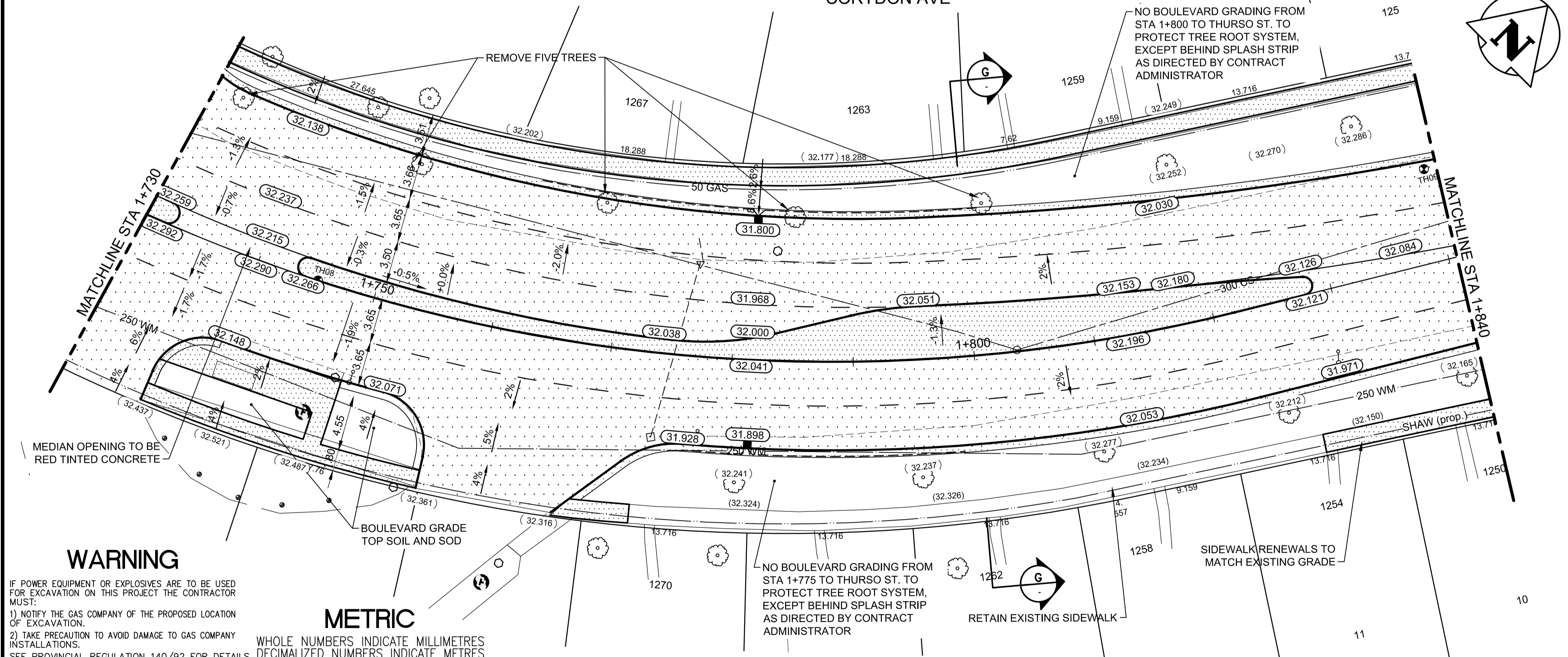
EASTBOUND LANES



NOTES:

- ADJUST EXISTING MANHOLES AS REQUIRED.
- ADJUST EXISTING VALVE AS REQUIRED.
- FOR CB's LEADS AND UNDERGROUND INFO SEE SHEET 24 TO 29.
- INSTALL SUB-DRAINS AS PER PLAN DRAWINGS AS PER SD-245 c/w CAPPED ENDS.
- PRIVATE APPROACHES ARE 200mm REINFORCED CONCRETE WITH 75mm BASE COURSE, 225mm-50mm SUB-BASE AND NON-WOVEN GEOTEXTILE.
- RETAIN EXISTING SUB-BASE AND REPLACE CONCRETE SLABS ONLY WHERE PUBLIC LANES, MEDIAN OPENINGS, AND LOCAL STREET TIE-INS WERE RECENTLY RECONSTRUCTED, AS DIRECTED BY THE CONTRACT ADMINISTRATOR.
- REFER TO TENDER SPECIFICATIONS FOR CONSTRUCTION REQUIREMENTS WORKING ON OR NEAR EXISTING GAS MAINS OR SERVICES.
- REFER TO TENDER SPECIFICATIONS FOR CONSTRUCTION REQUIREMENTS FOR WORKING ON OR NEAR EXISTING 900 FEEDERMAIN.
- BLUE PAVERS INSET IN SIDEWALK TO BE CONSTRUCTED AT EACH TRANSIT STOP AND WETSET CLAMP AS PER DETAIL ON SHEET 55.
- THURSO ST. TO STAFFORD ST. - ONLY STATIC COMPACTION PERMITTED FOR 100mm SUB-BASE.
- THURSO ST. TO STAFFORD ST. - SUB-CUTTING UNSUITABLE SUB-GRADE MAY NOT BE FEASIBLE DUE TO ABUNDANCE OF GAS SERVICES, GAS MAIN AND WATER SERVICES. CONTRACTOR TO USE SUITABLE EQUIPMENT AND METHODS.
- GAS ELEVATIONS ARE SHOWN FOR GENERAL GUIDANCE ONLY. CONTRACTOR IS RESPONSIBLE FOR CONFIRMING ALL ELEVATIONS AND LOCATIONS.

CORYDON AVE



WARNING

IF POWER EQUIPMENT OR EXPLOSIVES ARE TO BE USED FOR EXCAVATION ON THIS PROJECT THE CONTRACTOR MUST:
 1) NOTIFY THE GAS COMPANY OF THE PROPOSED LOCATION OF EXCAVATION.
 2) TAKE PRECAUTION TO AVOID DAMAGE TO GAS COMPANY INSTALLATIONS.
 SEE PROVINCIAL REGULATION 140/92 FOR DETAILS

METRIC

WHOLE NUMBERS INDICATE MILLIMETRES
 DECIMALIZED NUMBERS INDICATE METRES

150 WM		150 WM		HYDRO		C PROFILE	
	HYDRANT		M.T.S.		NORTH OR WEST GUTTER		SOUTH OR EAST GUTTER
	VALVE		CONCRETE		NORTH MEDIAN GUTTER		SOUTH MEDIAN GUTTER
	LAND DRAINAGE SEWER		ASPHALT		NORTH OR WEST P.L.		SOUTH OR EAST P.L.
	WASTE WATER SEWER		SIDEWALK		ASPHALT MILL & FILL		STREET LIGHT
	MANHOLE		HYDRO POLE		SURVEY BAR		ELEVATION
	CATCH BASIN		SIDEWALK RAMP		PROPERTY LINE		LEGEND-PLAN
	CURB INLET/CATCH PIT		EXISTING		PROPOSED		EXISTING
	TRANSIT STOP		GAS		PROPOSED		LEGEND-PROFILE
	GAS		EXISTING		PROPOSED		LEGEND-PROFILE
	PROPERTY LINE		EXISTING		PROPOSED		LEGEND-PROFILE
	LEGEND-PLAN		EXISTING		PROPOSED		LEGEND-PROFILE

LOCATION APPROVED UNDERGROUND STRUCTURES

SUPV. U/G STRUCTURES COMMITTEE	DATE

NOTE:
 LOCATION OF UNDERGROUND STRUCTURES AS SHOWN ARE BASED ON THE BEST INFORMATION AVAILABLE BUT NO GUARANTEE IS GIVEN THAT ALL EXISTING UTILITIES ARE SHOWN OR THAT THE GIVEN LOCATIONS ARE EXACT. CONFIRMATION OF EXISTENCE AND EXACT LOCATION OF ALL SERVICES MUST BE OBTAINED FROM THE INDIVIDUAL UTILITIES BEFORE PROCEEDING WITH CONSTRUCTION.

B.M. ELEV.	NO.	REVISIONS	DATE	BY

Stantec
 500 - 311 Portage Avenue, Winnipeg MB Canada
 www.stantec.com

DESIGNED BY T.G.	CHECKED BY R.K.H.
DRAWN BY M.K.	APPROVED BY S.R.S.
HOR. SCALE: 1:250	RELEASED FOR CONSTRUCTION:
VERTICAL: 1:10	DATE

ENGINEER'S SEAL

PRELIMINARY DRAWING

NOT TO BE USED FOR CONSTRUCTION

CONSULTANT DRAWING NO.
C-207

THE CITY OF WINNIPEG
 PUBLIC WORKS DEPARTMENT
 ENGINEERING DIVISION

2019-2023 STAFFORD/TAYLOR/CORYDON
 TENDER 1
 CORYDON AVENUE
 STA 1+730 TO STA 1+840
 ROADWORKS - RECONSTRUCTION

SHEET 12 OF 55
 CAD FILE DRAWING NUMBER
 08020c-204-932.dwg
 CITY DRAWING NUMBER
 P-3524-12